

An abstract painting featuring thick, expressive brushstrokes. The composition is dominated by dark, earthy tones like deep reds, browns, and blacks, which are layered over lighter, more vibrant areas of green and ochre. The texture is highly tactile, with visible ridges and valleys of paint. The overall effect is one of raw energy and emotional intensity.

KYLE MURRELL
Always at Every Moment

KYLE MURRELL

Always at Every Moment

31 May – 21 June 2025

Some visitors came to a painter's studio. Most remained silent as they were shown the paintings; a few offered appreciative comments. But just as the painter thought the presentation had reached its end, one visitor stepped forward, pointed their foot at a patch of paint on the floor and said exactly what he had been thinking.

“There's more life in that stain than on all of your canvases put together.”

I am the painter to whom something like this happened, not Kyle Murrell. But I have set this anecdote in relation to his paintings because I think that I and my visitor, the connoisseur of stains, could both learn something from them.

We would certainly appreciate their vitality. There is in Murrell's paintings a vibrancy of facture which does not suffer by comparison with the world's more intriguingly worn and torn surfaces. Forceful impacts seem to have left an imprint on some; others are marked by more subtle touches. I find it hard to explain what the artist has done to produce many of these effects but there is no mistaking the expressive variation they give to his work. Each painting manifests its own weight of presence.

Yet physical presence is only one dimension of Murrell's paintings. Drawing has always been important to him as a reflection on the experience of seeing. His comprehension of the world as a field of forms, voids and energies carries over to the paintings. It's evident in the way that masses have been coaxed from voids; in tonal gradations that initially express their own vehement presence but then, given time and attention, come to suggest the play of light through a space. There is structure in his compositions, an open structure that incorporates ambiguity. In this respect his work reaches all the way back to Cézanne, whose paintings are seeded in the visual sensation that occurs before conventions of naming and description take hold. It's not easy to say what Murrell's paintings represent, but they do elicit a form of recognition.

On the day of that studio visit my paintings might well have lacked vitality but I'm not sure that the timeworn surfaces of the environment showed the way out of the impasse. Consciousness is an unavoidable fact of being human. Kyle Murrell understands this and the strength of his work lies in their integration of thought and feeling into the materiality of painting. His paintings are living entities, poetic and unique.

Joe Frost, May 2025

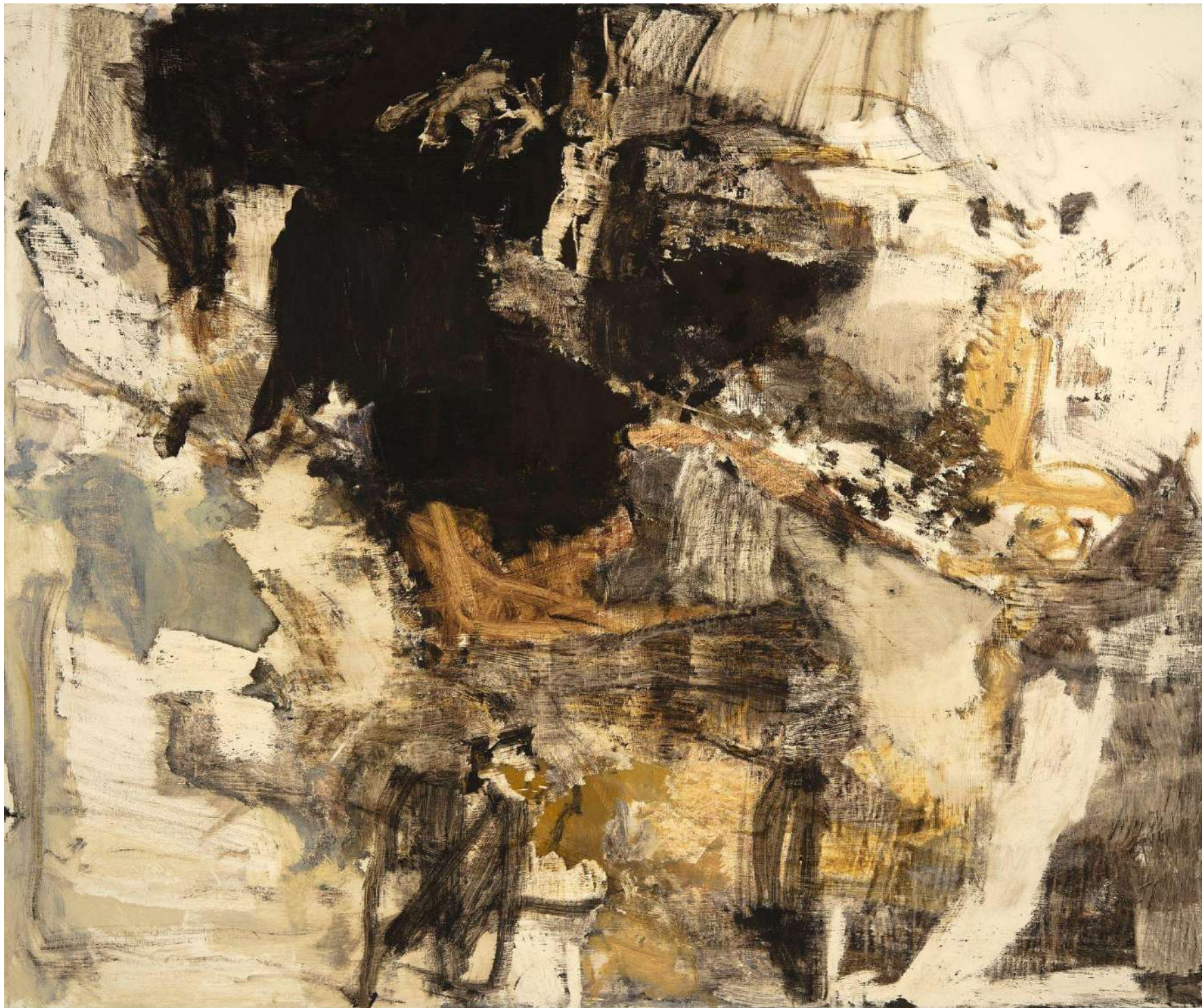


Scapegoat

oil on canvas

182 x 198 cm, 185 x 201 cm (framed)

\$9,200



Symphony

oil on canvas

152 x 182 cm, 155 x 185 cm (framed)

\$8,500

Afterlight, Landmark
oil on canvas
182 x 167 cm, 185 x 170 cm (framed)
\$8,800





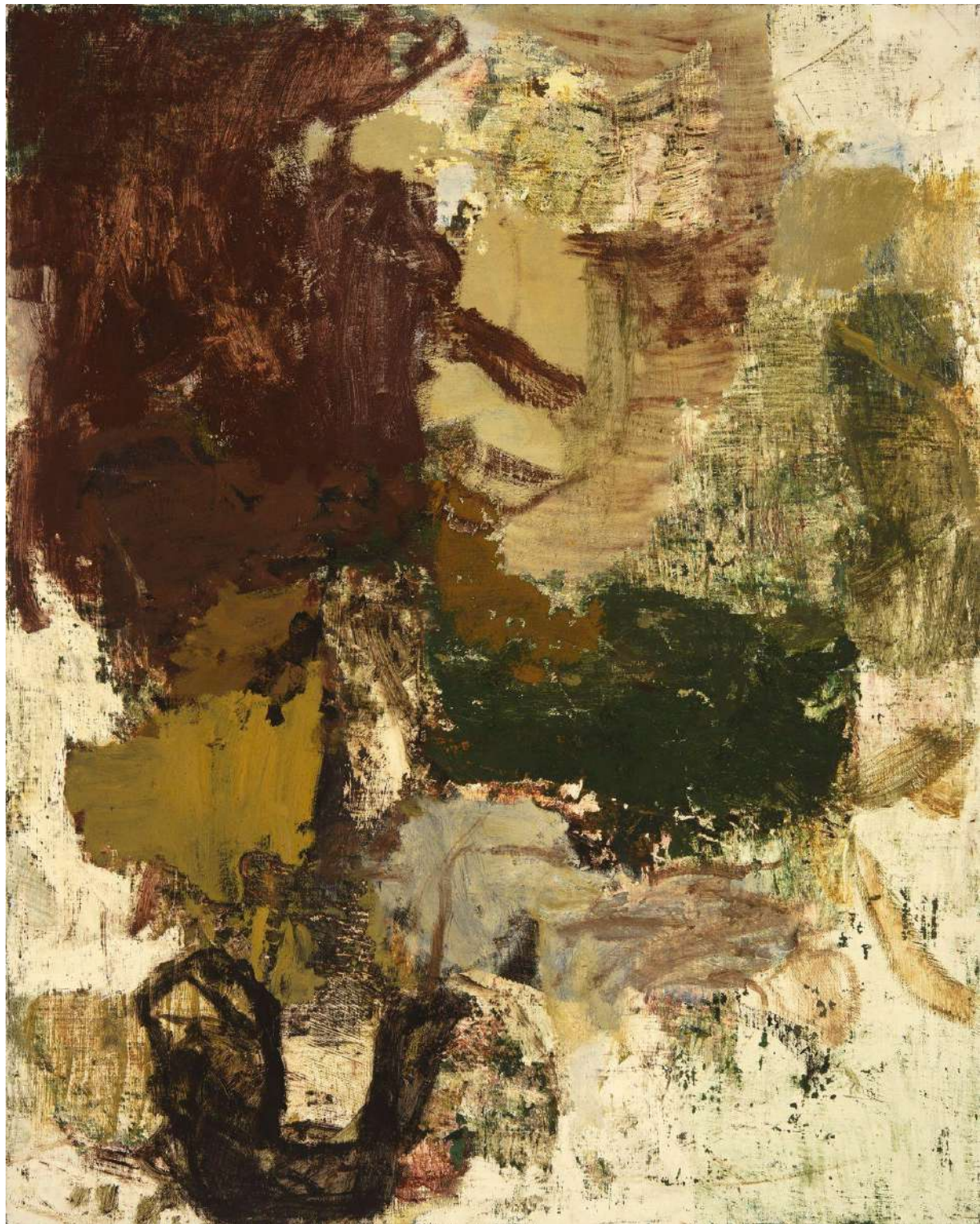
Corpus Loam

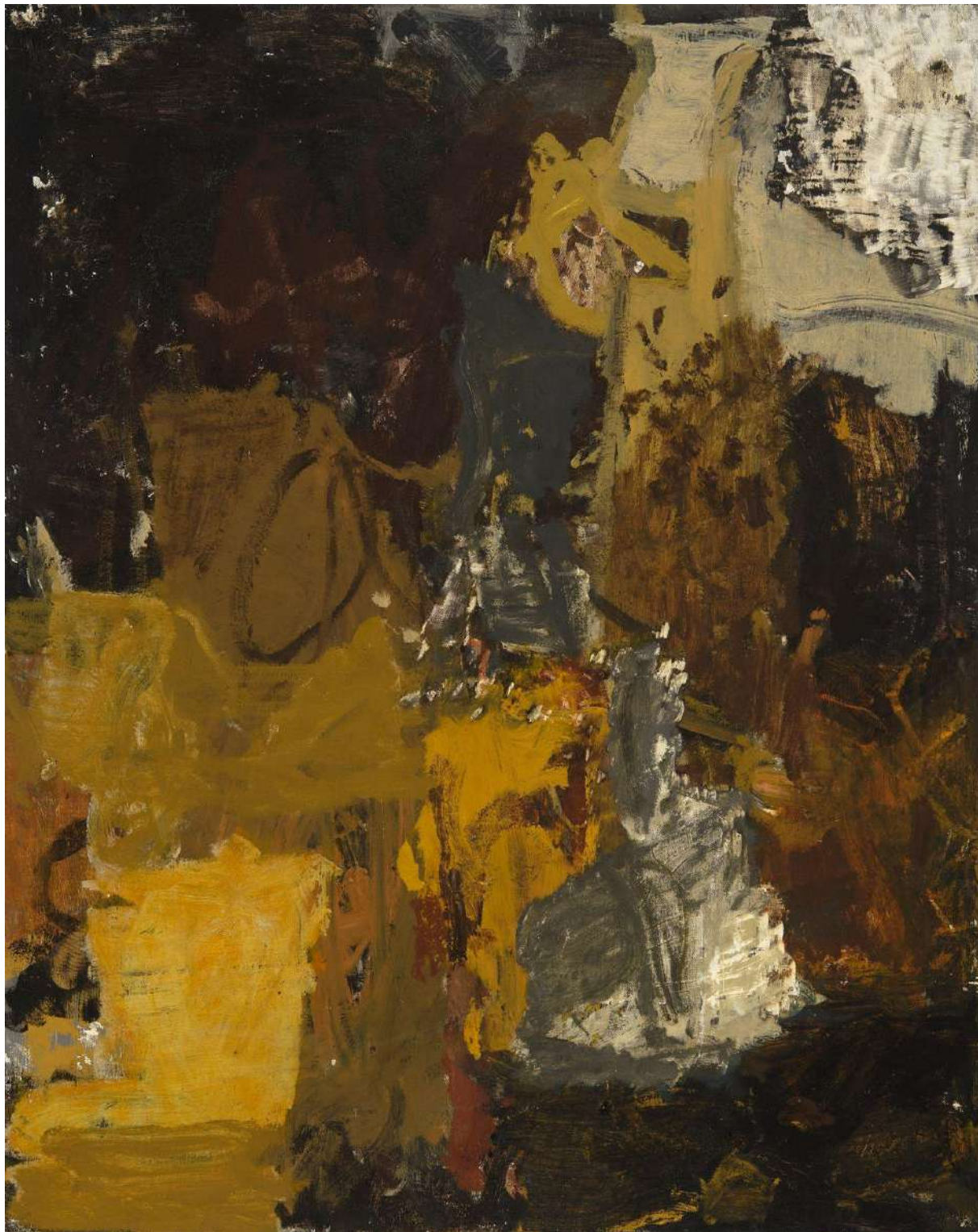
oil on linen

122 x 137 cm, 125 x 140 cm (framed)

\$6,200

Fold Line
oil on linen
1152 x 122 cm, 155 x 125 cm (framed)
\$6,500



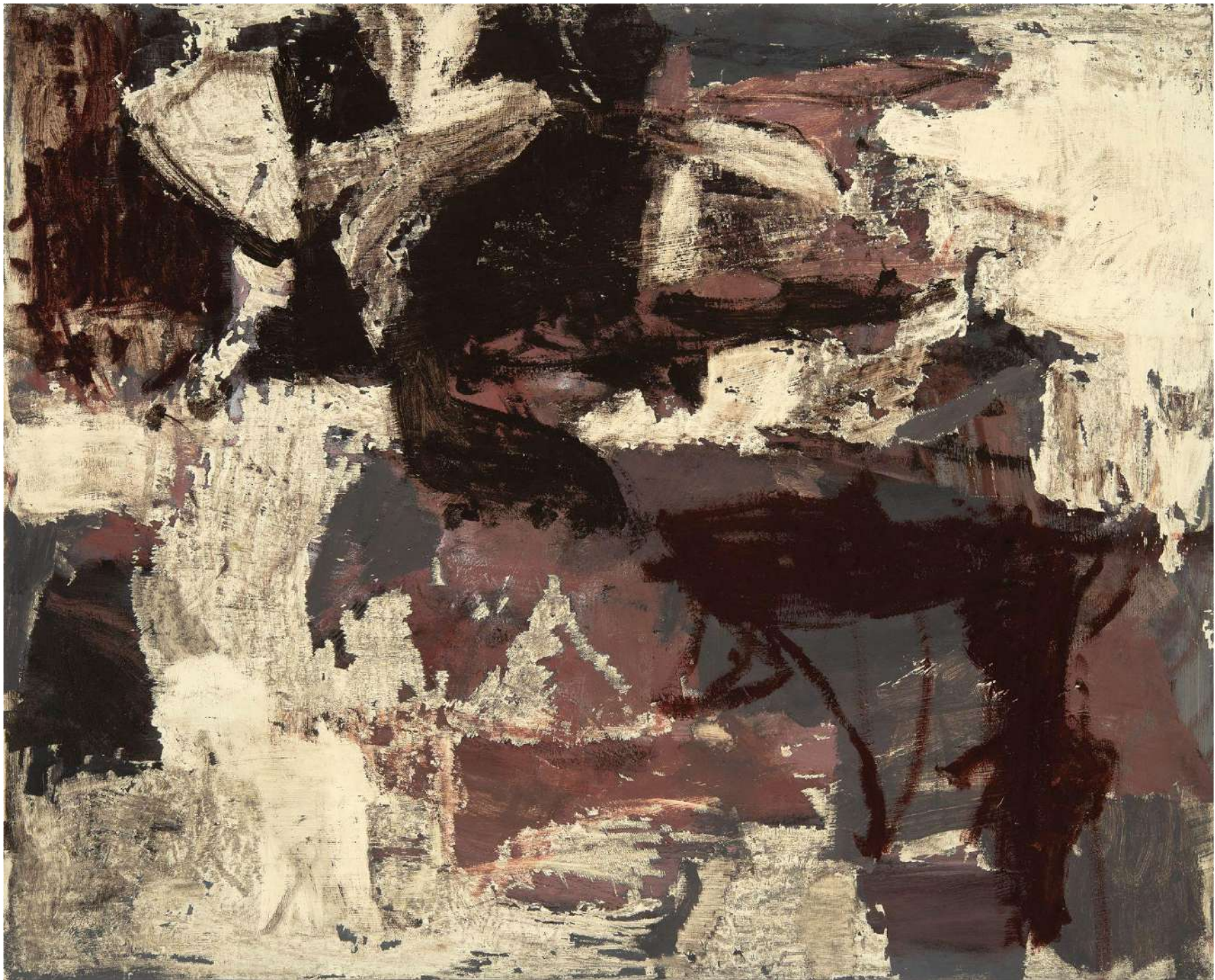


Dwelling, Shelter

oil on linen

152 x 122 cm, 155 x 125 cm (framed)

\$6,500



Slipway

oil on linen

122 x 152 cm, 125 x 155 cm (framed)

\$6,500

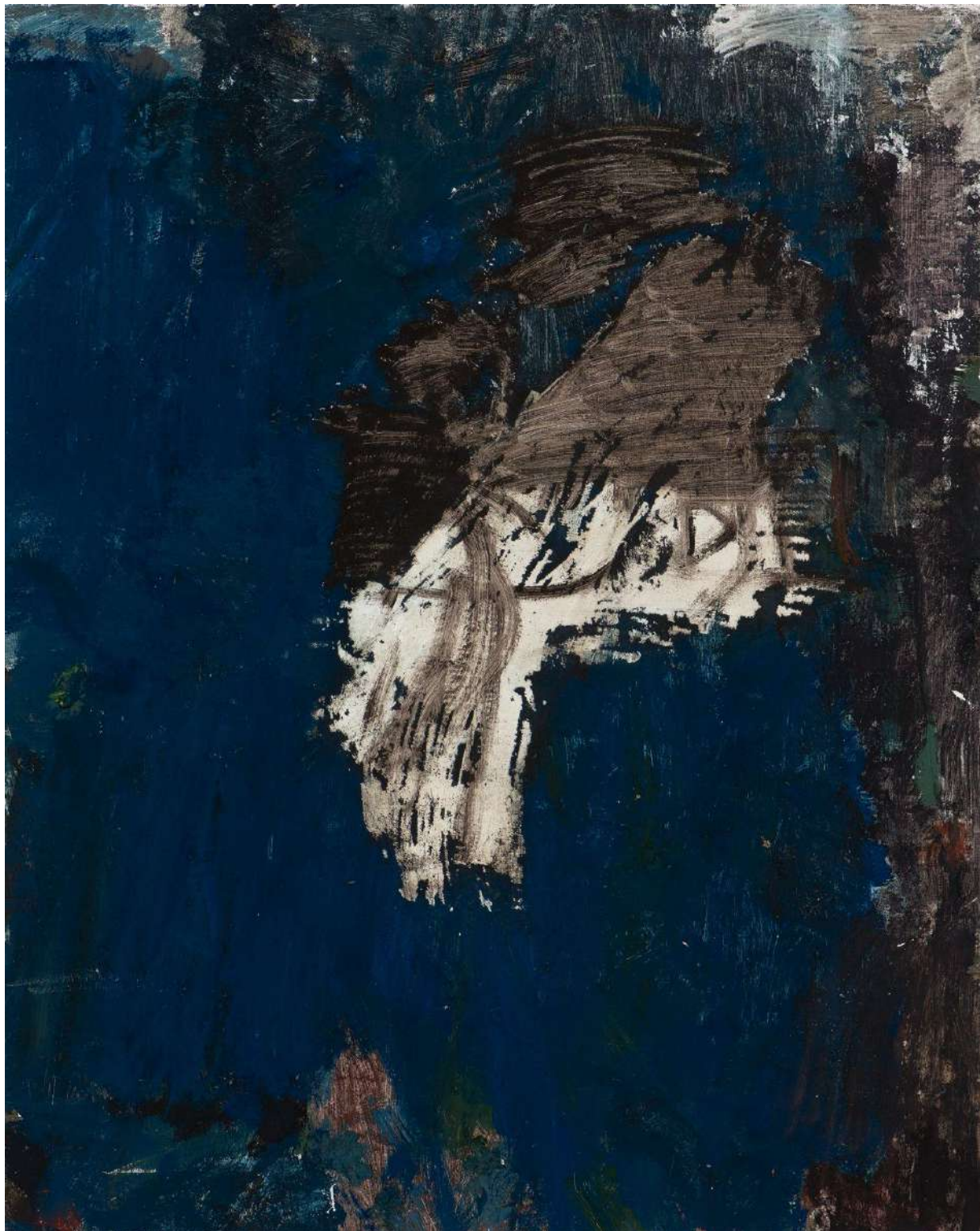


Learn To

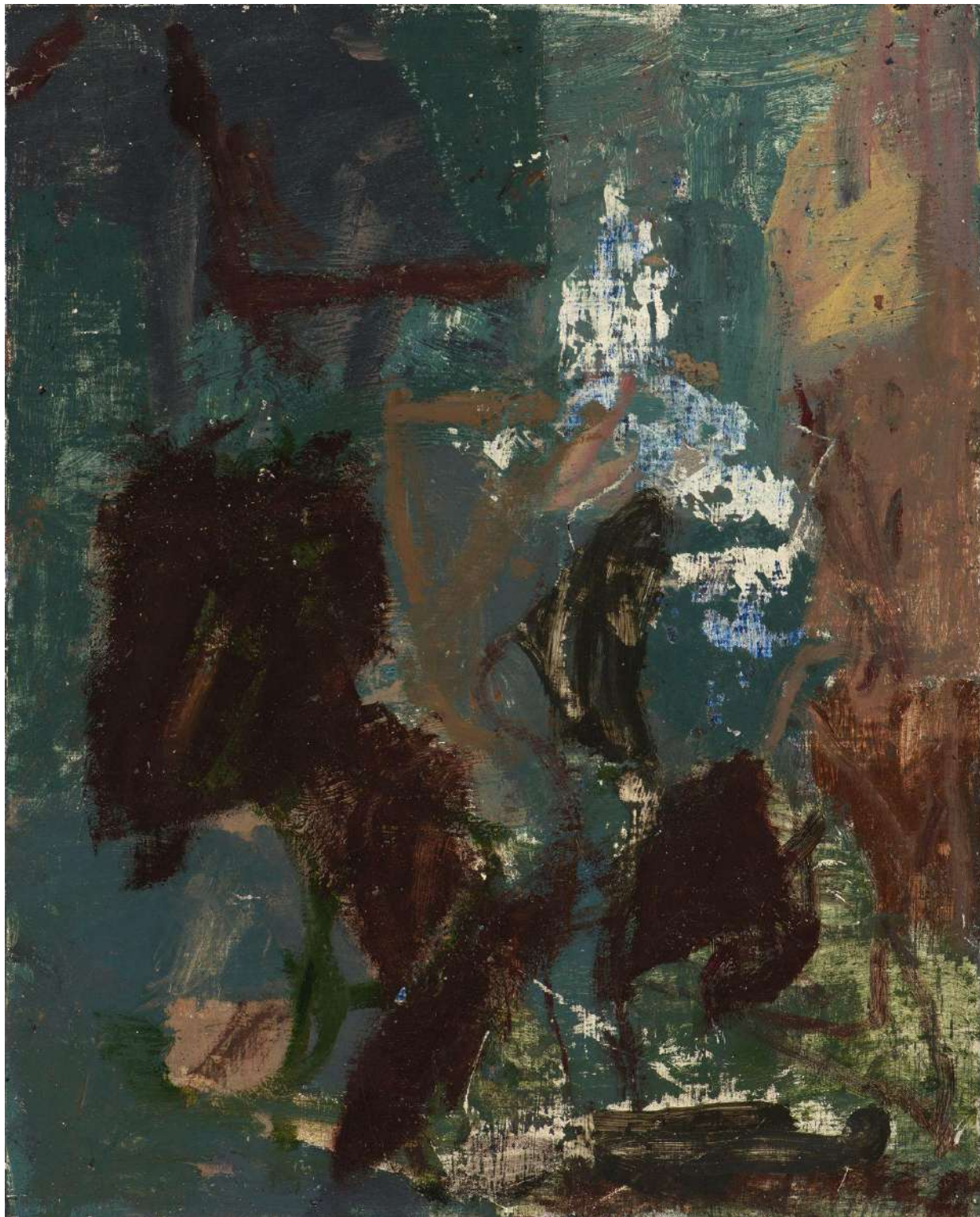
oil on canvas

81 x 101 cm, 84 x 104 cm (framed)

\$4,500



The Passenger
oil on canvas
101 x 81 cm, 104 x 84 cm (framed)
\$4,500



Bouquet

oil on linen

101 x 81 cm, 104 x 84 cm (framed)

\$4,500

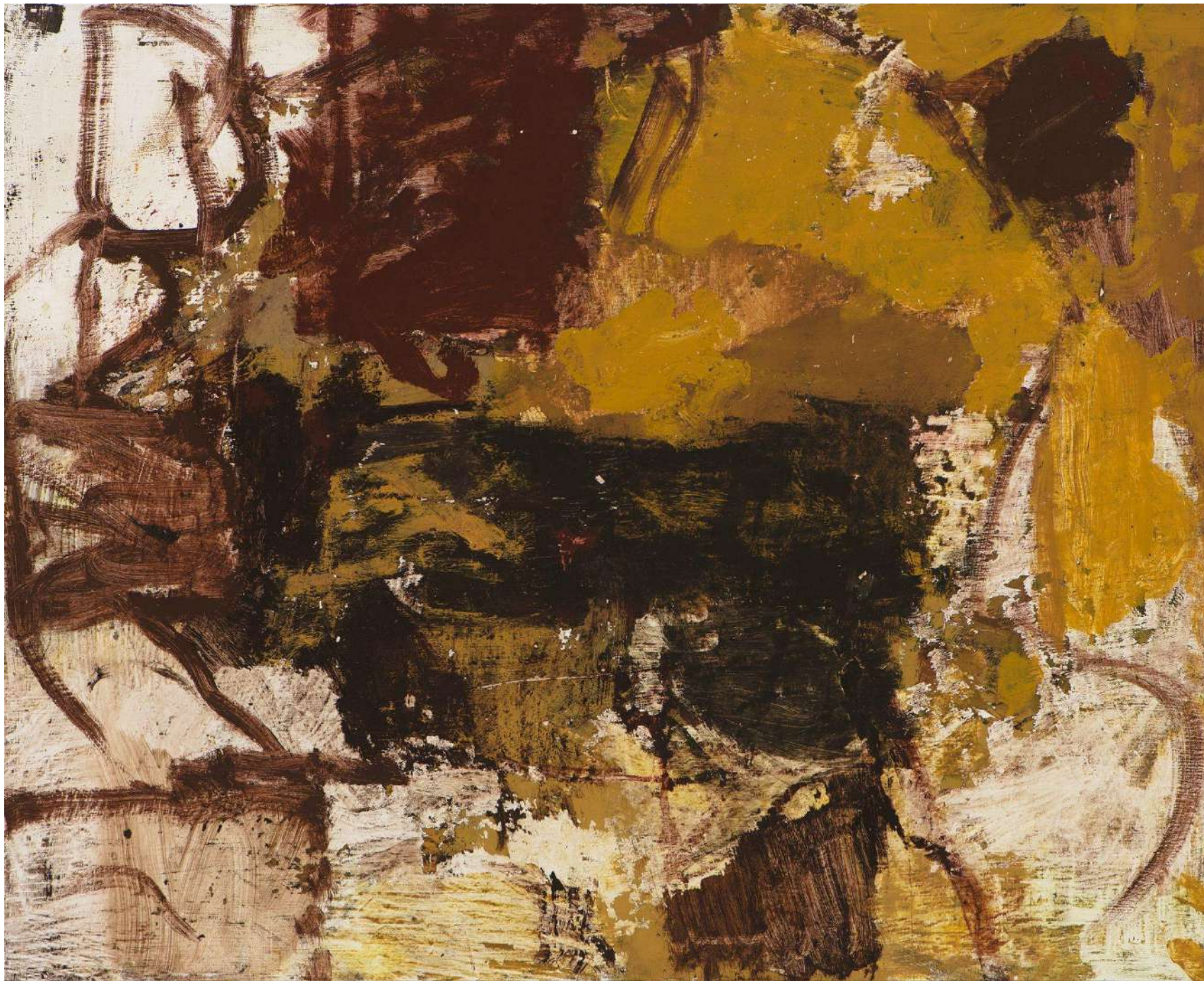


Brute

oil on boxboard

81 x 101 cm, 84 x 104 cm (framed)

\$4,500



Drift Pin

oil on canvas

81 x 101 cm, 84 x 104 cm (framed)

\$4,500



Gust

oil on canvas

81 x 101 cm, 84 x 104 cm (framed)

\$4,500

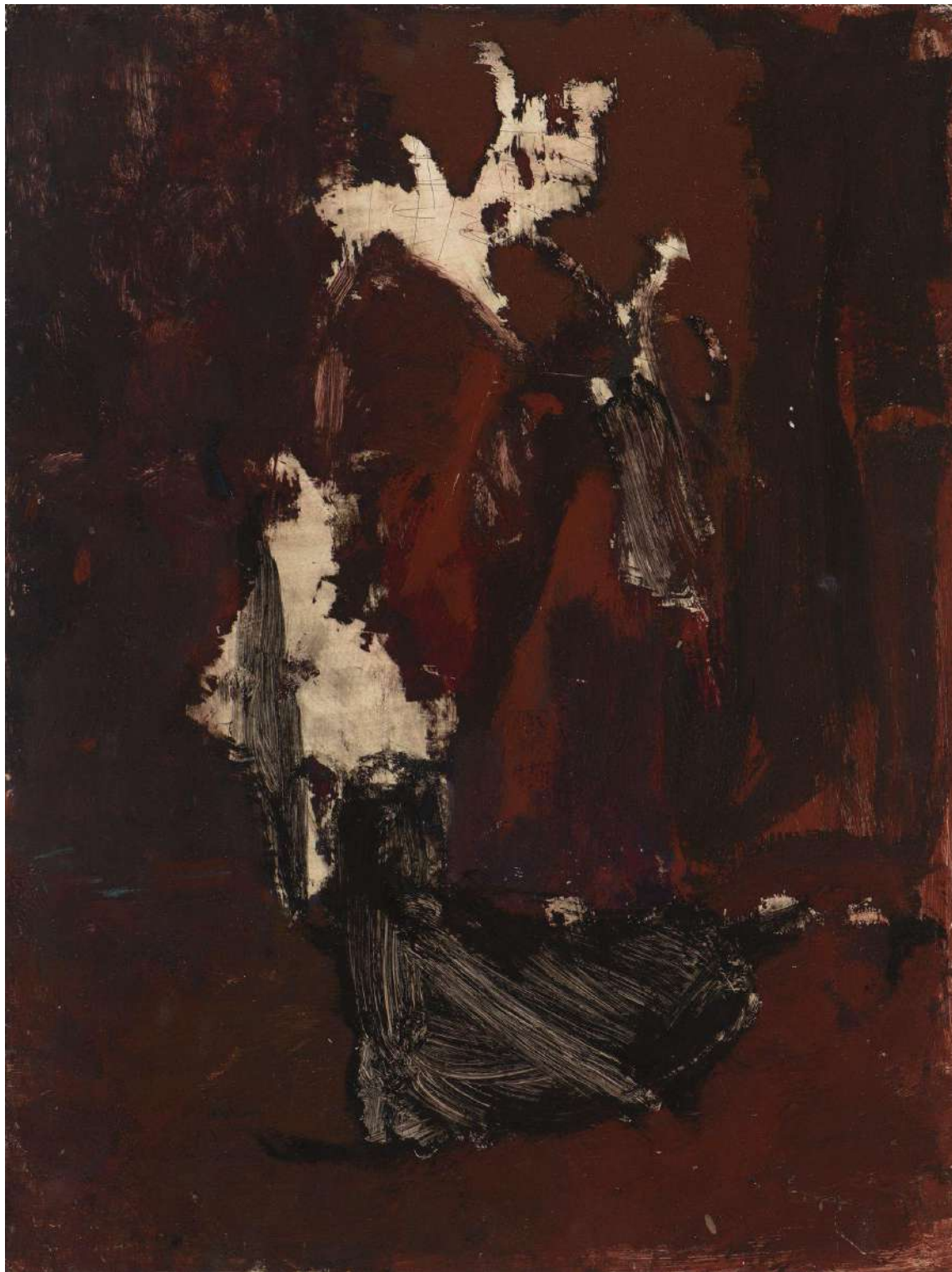


Sunflower

oil on panel

45 x 60 cm, 48 x 63 cm (framed)

\$2,900



Twist

oil on panel

45 x 60 cm, 48 x 63 cm (framed)

\$2,900



Thrum

oil on panel

45 x 60 cm, 48 x 63 cm (framed)

\$2,900

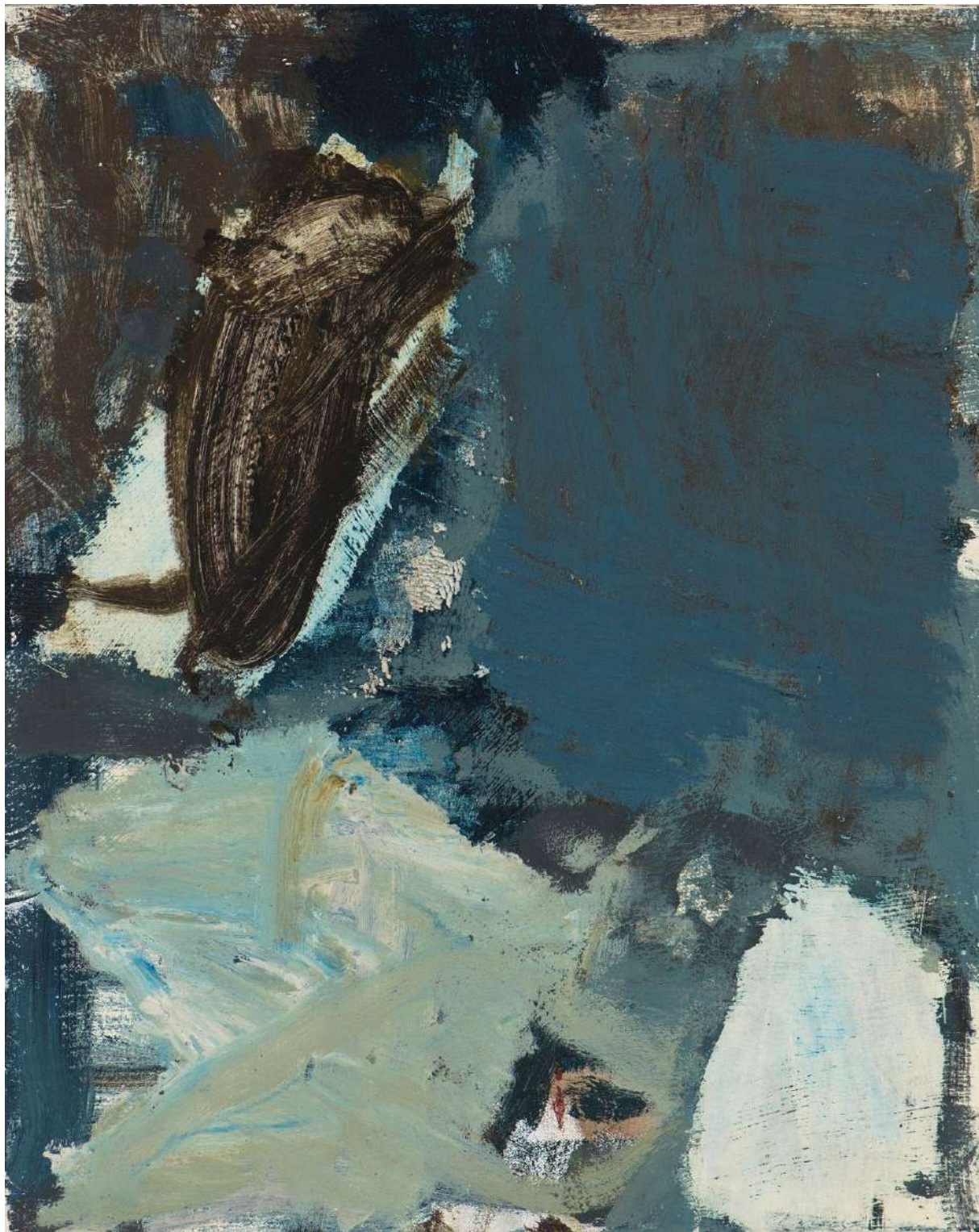


Carnival

oil on canvas

40 x 50 cm, 43 x 53 cm (framed)

\$2,500

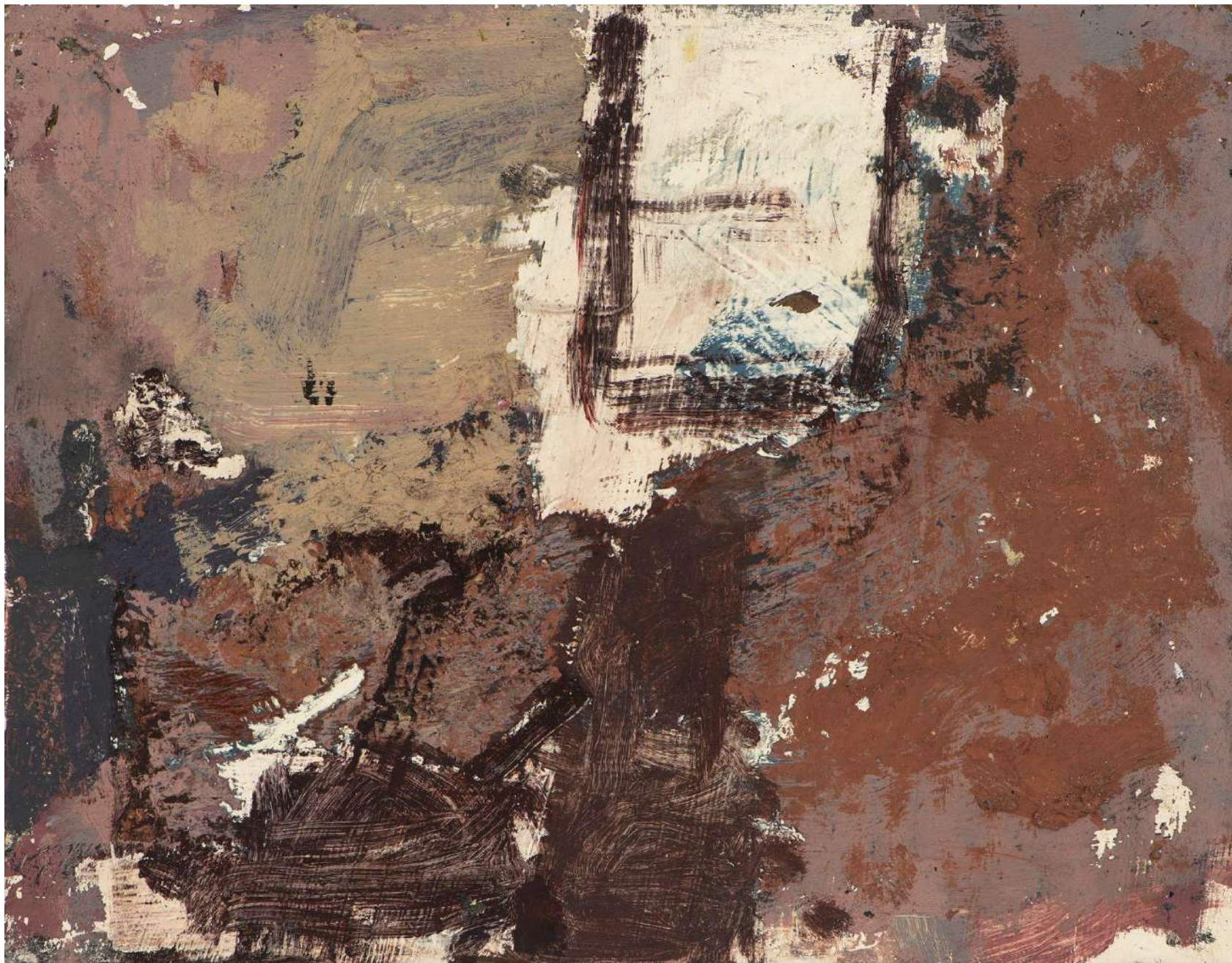


Tinct

oil on canvas

40 x 50 cm, 43 x 53 cm (framed)

\$2,500



Stray Light
oil on panel
35 x 45 cm, 38 x 48 cm (framed)
\$2,500

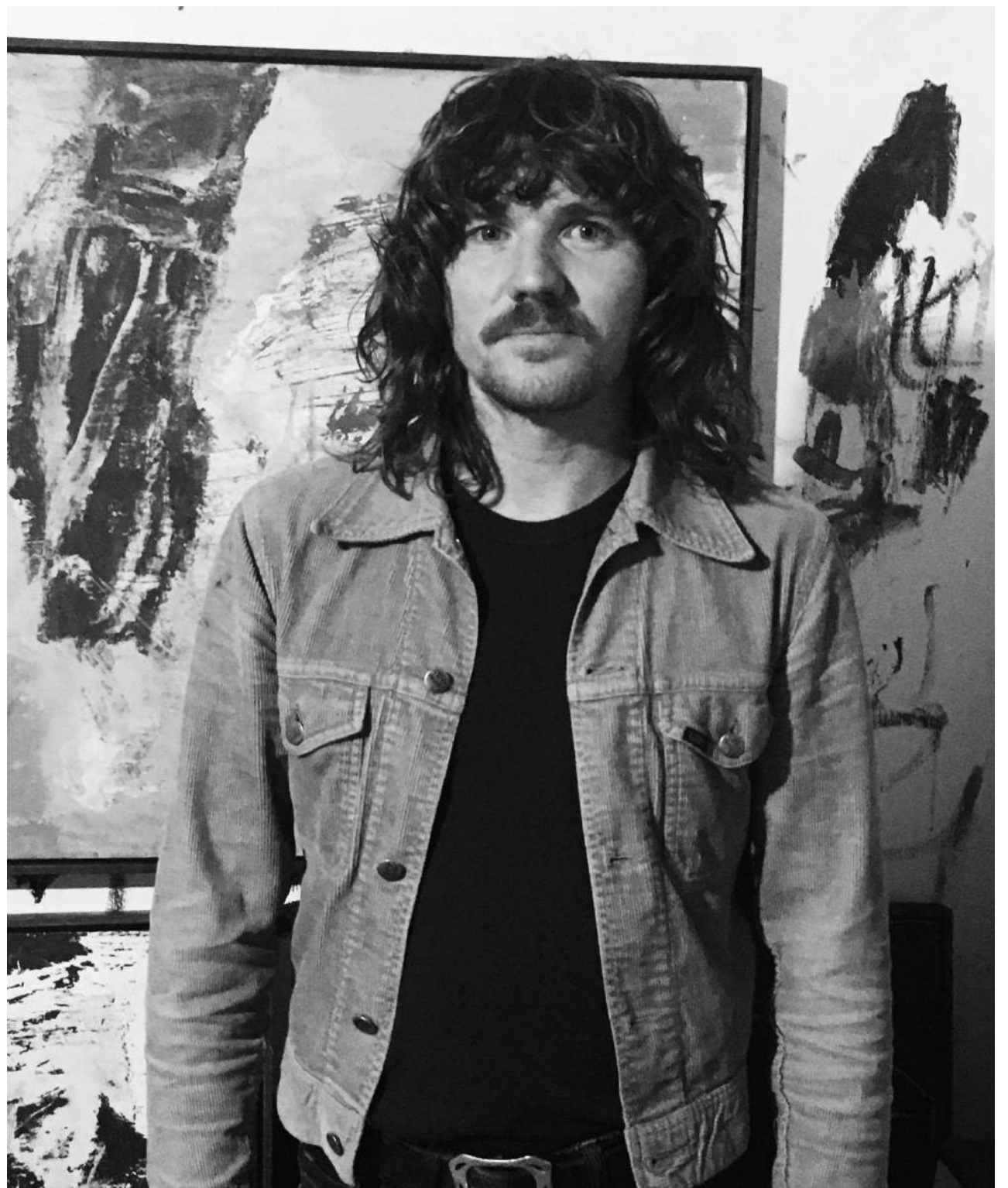


Bedpost

oil on panel

35 x 45 cm, 38 x 48 cm (framed)

\$2,500



DEFIANCE
GALLERY at Mary Place | Est 1995

12 Mary Place Paddington NSW 2021 | 02 9557 8483 | defiancegallery.com | enquiry@defiancegallery.com